

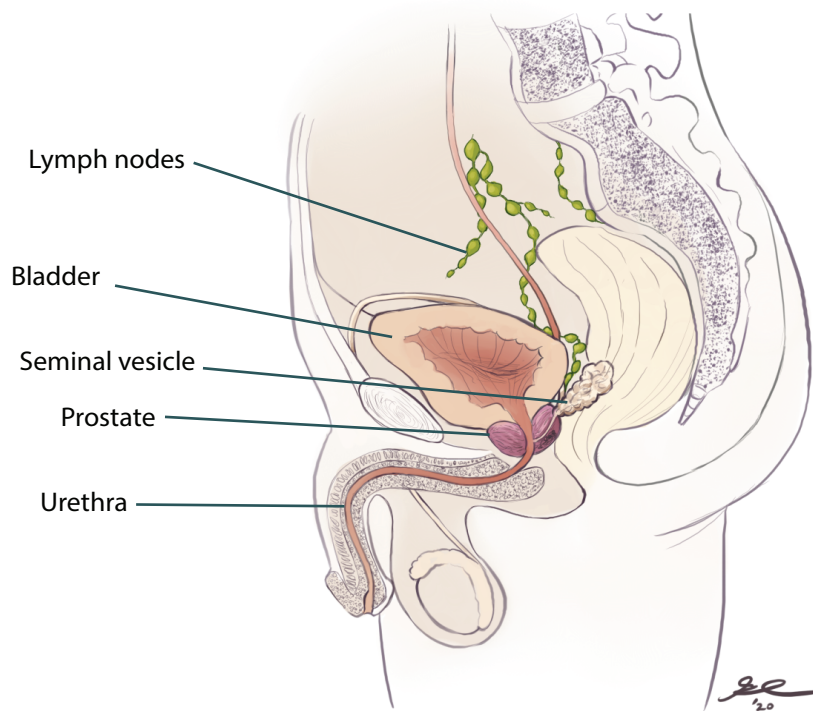
Prostatectomy Information Guide

Open and Robotic

About the Procedure

- Your surgeon has determined that you will need a surgery to remove your prostate. The prostate is a walnut sized organ that sits on the pelvic floor and it is located below the bladder. Seminal vesicles are located behind the prostate and are connected to the prostate (**Figure 1**).
- A radical prostatectomy is a surgery performed to remove the prostate and surrounding tissues. Your surgeon will discuss with you whether the lymph nodes will also be removed.

Figure 1



What To Expect Before the Procedure

- You will receive a general anesthetic before your surgery, so you will not be awake or feel any pain.
- You will receive an injection of local anesthetic into the incisions to help with the postoperative pain.

What To Expect During the Procedure

- Depending on the type of surgery that you and your surgeon have determined is appropriate for you, you will either have a single larger incision just above the pubic bone, in the middle of the abdomen, or a few small incisions made on the abdomen (**Figure 2**).
- The prostate and the surrounding tissue will be completely removed. Your surgeon will discuss whether your lymph nodes will be removed (**Figure 3**).
- You will wake up from surgery with a urinary catheter in the bladder, and possibly a second tube or drain in the abdomen. The drain will likely be removed prior to your discharge from the hospital.

Figure 2

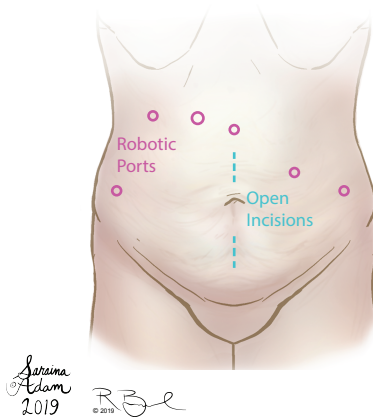
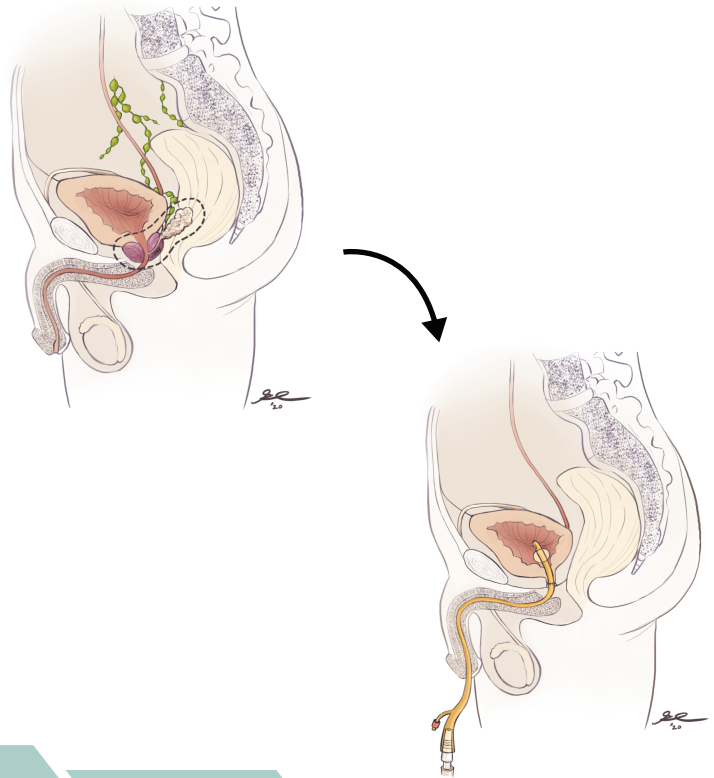


Figure 3



What To Expect After the Procedure

- You will recover in the hospital. Expect to stay at least one night. Many patients are able to go home the day following surgery.
- You may have a pain pump called a patient-controlled analgesia (PCA) device. Your pain medications will initially be given through an IV line. As soon as you are able to tolerate a diet, your pain medication will be given by mouth.
- Anticipate early ambulation after surgery. Your nurse will help you to walk the same day as, or the day after surgery. Walking is very important. If you need additional assistance walking, this can be provided for you.
- You are encouraged to chew gum. You will likely start a diet of clear liquids, and can expect to be eating regular food on the first or second day after surgery. There is no danger to eating regular food after surgery.
- You will have a urinary catheter in your bladder when you wake up, and this will likely be removed within a week of your surgery.

Discharge

Further instructions will be provided prior to your discharge from the hospital